

## Semester Exchange at Maastricht University

### School of Business and Economics

#### Information Sheet



#### The city Maastricht



Maastricht gained international fame as the host of the European Summit 1991, where the treaty of Maastricht was adopted as the formal foundation of the European Union. Situated in the heart of Europe, the city is just a short distance away from Belgium, Germany and France. A city rich in history, Maastricht has a truly international flavour and as the charming provincial capital of Limburg, it is one of the oldest and most attractive cities in the Netherlands.

#### Maastricht University

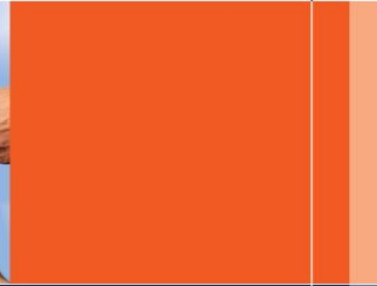
Maastricht University is highly regarded in Europe for its unique teaching style and high-quality research. For several years now, a number of national surveys have ranked consistently Maastricht University, and more specifically the Maastricht University School of Business and Economics (SBE), as the best in terms of education and research. Moreover, SBE has been awarded three prestigious accreditations, resulting in the so-called Triple Crown accreditation. Only 1% of



business schools worldwide have this Triple Crown, meaning that the School is amongst a very select group of institutions such as INSEAD, Vlerick Leuven Gent Management School, London Business School and SBE's exchange partners HEC Montreal, Queen's School of Business, the University of Waikato, and EDHEC Lille/Nice.

It is a distinctly international institution with a student population consisting of over 66 nationalities. Of the total of 4150 bachelor and master students more than 1500 (40%) have a foreign background. Additionally, the School yearly welcomes about 700 exchange students from around 140 partner universities worldwide.

SBE creates a sound study environment by providing its students with modern and technical well-equipped study rooms and research facilities, a large selection of reference books, various work stations throughout the School as well as a central student services centre.



## Semester Exchange at Maastricht University

### School of Business and Economics

#### Courses at SBE

Exchange students can use our course database to work out their study path: <http://code.unimaas.nl/> \*

\* When you open the course database, make sure to always select the [Exchange](#) course list.

The language of instruction of all courses is English.



#### Learning System at the Maastricht University School of Business and Economics

The most well-known characteristic of Maastricht University and its Faculties is the “Problem-Based Learning (PBL)” system, which was adopted by Maastricht University in 1976. PBL tries to overcome the weaknesses of traditional education by giving the students an active role during lectures. Students do not spend hours listening to lectures, but attend tutorial group meetings twice a week. These meetings are the core activity of the study programme and are the driving force for learning. Within these tutorial groups, problems are presented as cases and are studied in periods of six to eight weeks. A tutorial group consists of eight to fifteen students plus a tutor (a staff member who guides the group process but who does not automatically give answers to the problems). The initiative lies with the student: the learning method is explicitly student-centred rather than teacher-centred. This way, students easily discover those areas in which their knowledge falls short. Libraries and various other learning resources that have been especially developed for this method are available for the subsequent individual learning activities. Specific information about the PBL educational system is available via:

- ✓ <http://www.maastrichtuniversity.nl/sbe> → Education → Exchange Programme → Incoming Students → Academics → Problem Based Learning
- ✓ <http://www.umpblprep.nl/>



## Semester Exchange at Maastricht University

### School of Business and Economics

#### Semester dates 2015/2016

##### FALL SEMESTER

Thursday 27 & Friday 28 August 2015:

##### Compulsory Introduction Days

31 August 2015: start classes

19 - 23 October 2015: exams period 1

14 - 18 December 2015: exams period 2

04 - 08 January 2016: re-sits period 1

11 - 22 January 2016: skills period 3 (not compulsory for exchange students)

04 - 08 April 2016: re-sits period 2

##### SPRING SEMESTER

Thursday 28 & Friday 29 January 2016:

##### Compulsory Introduction Days

01 February 2016: start classes

29 March - 01 April 2016: exams period 4

30 May - 03 June 2016: exams period 5

06 - 10 June 2016: re-sits period 4

13 - 24 June 2016: skills period 6 (not compulsory for exchange students)

04 - 08 July 2016: re-sits period 5

#### Course registration deadlines

	Starts	Ends
Period 1	01 June 2015	15 July 2015
Period 2	01 June 2015	13 September 2015
Period 3 (skills)	01 June 2015	08 November 2015
Period 4	01 June 2015	29 November 2015
Period 5	01 June 2015	21 February 2016
Period 6 (skills)	01 June 2015	17 April 2016

#### Application deadlines 2015/2016

##### FALL SEMESTER

**15 May 2015:** online application as exchange student

##### SPRING SEMESTER

**15 October 2015:** online application as exchange student

*Please note that the academic calendar is still subject to change and will only be definite by the end of April 2015. However, we do not expect any drastic changes.*



## Semester Exchange at Maastricht University

### School of Business and Economics

#### Cost estimate

Accommodation:

- Starting at approx. €350 per month (double room)

Food / meals:

- Food (no meal plans available): students can prepare meals in the fully equipped, shared kitchens in the UM Guesthouse.
- The Maastricht University School of Business and Economics houses a cafeteria facility (MENSA). The MENSA offers a broad assortment of food and beverages at student-friendly prices.
- Groceries: expect to pay approximately €50 per week.
- Restaurants: €10 and up (main dish)

Local transportation:

- Bus drive with OV-chip card:
  - For more information please check:  
<http://www.veolia-transport.nl>
- Second hand bike €60 - €80

Academic expenses:

- About €80 - €90 per period

Other administrative fees:

- No fees to be paid at SBE

#### Residence permit/visa

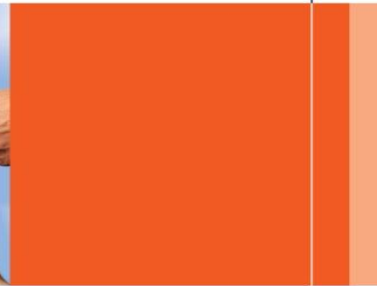
Nationals of the following countries do not need a visa to study in The Netherlands:

Members of the EU, EEA, Switzerland, Australia, Canada, Japan, Monaco, New Zealand, South Korea, United States of America and Vatican City State.

A visa is necessary for internationals of all other countries when staying for more than three months. All non-EU nationals need a residence permit for a stay of more than three (3) months.

Please check the webpage of our Visa Office for more information: <http://www.maastrichtuniversity.nl/visa>

Our Visa Office will contact you regarding the visa procedure. As soon as you hear from them, we do urge you to react immediately and provide them with the necessary documents otherwise you risk a delay in your visa application. This could potentially endanger your semester abroad as you may not receive your visa in time in order to travel to The Netherlands for the start of your semester.



## Semester Exchange at Maastricht University

### School of Business and Economics

#### **Nuffic certificate**

*If you are a Chinese national (even if you are currently living outside China) you have to get a Nuffic Certificate, to be eligible for a Dutch entry visa. This does not apply to Hong Kong (SAR), Macau (SAR) and Taiwan (ROC) nationals.*

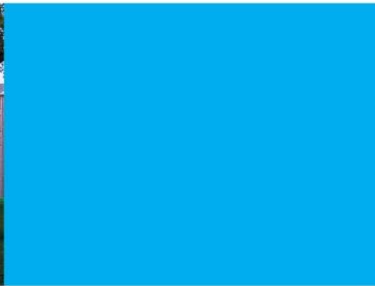
Students with the Chinese nationality (excluding British National Overseas) are required to submit a Nuffic Certificate. This is a document issued by Nuffic (*Netherlands organization for international cooperation in higher education*) that provides an assessment of a student's English language proficiency and of the validity of the diplomas and degrees. Chinese students who wish to enrol in an English-taught programme at a Dutch higher education institution are required to apply for a Nuffic Certificate. In order to receive the Nuffic certificate, students need to prove the English language proficiency. This means that a minimum language requirement of a TOEFL score of at least 6.0 or an IELTS score of at least 79 is required.

However, students holding the Chinese nationality coming from one of our partners residing in Hong Kong (SAR), Macau (SAR), Taiwan (ROC) or any English-speaking country (e.g. Australia, New Zealand, United States, Canada, Singapore) where education is completely in English are exempted from the English language proficiency test. When applying for the Nuffic Certificate they must provide a motivation that they request an exemption for the English language test (because they are currently studying at a university located in Hong Kong, Taiwan, Macau or in an English speaking country). We will provide the Nuffic organization with a list of the names of the students who are eligible for the exemption. Do note that the exemption is only given for the English language test score. The students will always need a Nuffic Certificate in order to be eligible for a visa for The Netherlands.

Please note that the registration for a "Nuffic Certificate" does NOT replace the regular application procedures of the Dutch universities and institutions of higher education.

The entire application procedure for the Nuffic Certificate is available on the Nuffic webpage via: <http://www.nuffic.nl/international-students> → Practical Matters → Visas and permits → Nuffic Certificate for Chinese students → Application procedure

We strongly recommend students to register for the Nuffic Certificate at least four months prior to their intended departure for the Netherlands.



## Semester Exchange at Maastricht University

### School of Business and Economics

#### English Language Requirement

Since the official language at our School is English and all courses are taught in English, exchange students are required to have an advanced level of the English language (comparable to the level B2 of the [Common European Framework of Reference](#)) to be able to successfully complete their courses at our School (note that we do not require any proof of an ENGLISH LANGUAGE TEST SCORE).

Please note that if your goal is to improve your English, this is not the right University for you to come to. Our educational system, the Problem Based Learning (PBL) system, requires you to actively take part in the lectures, or tutorial meeting as we call them. The PBL method is explicitly student-centred rather than teacher-centred. Students are expected to take the initiative. Speaking up and actively taking part in discussions is a crucial part of the system and this will also influence students' final grades. Therefore it is extremely important for exchange students to master the English language written as well as spoken.





## Semester Exchange at Maastricht University

### School of Business and Economics

#### Housing

##### *Maastricht Housing*

Most exchange students find accommodation through Maastricht Housing. Most of the buildings are located in the vicinity of the Faculties and are easily accessible by bike or on foot. Unfortunately SBE cannot guarantee that all students who apply for a room via Maastricht Housing actually get a room. Applications are processed on a first-come-first-served basis, and we have no influence on that process. Applications and information via [www.Maastrichthousing.com](http://www.Maastrichthousing.com)

##### *How to find housing on your own?*

Exchange students are not obliged to get a room via Maastricht Housing, even though it is the easiest option. They can also find a room on the private market. Check the following websites for alternatives:

- [www.HousingAnywhere.com](http://www.HousingAnywhere.com): local, outgoing students sublet their room for a short period of time to incoming students.
- [www.studentflatmaastricht.com](http://www.studentflatmaastricht.com): provides help to students to find rooms, studios, and apartments in Maastricht, being furnished or not furnished and possibly top located.

*It may be good to realise that SBE's International Relations Office **cannot and will not** interfere on your behalf in case of legal disputes, whether with the UM Guesthouse, MaastrichtHousing, HousingAnywhere, Kamerburo, or private persons or landlords. If faced with legal problems you are advised to go to the student law agency ("Studenten Rechtsbureau"), which is an agency for all UM students, run by UM Law Students.*